



# Deployment Services

You've heard the phrase "too many cooks in the kitchen"? The adage applies to deploying new equipment in your network. From the time your network gear is ordered to having it installed and turned-up, there are many points of coordination and skilled engineering services needed. Working with one team with years of experience, who know that networks are complex and new gear doesn't just function without the proper connectivity and environment to sustain its well-being, gives you peace of mind in your investment, saves you time, money, and heartache.

**Deployment Services ensure your new network equipment is inventoried, staged for deployment, delivered and installed at your sites, tested and integrated for optimal performance.**

There's no mystery working with us. We'll be at your team's side every step of the way to confirm that each phase of deployment is managed as efficiently and effectively as possible, and that the staff learn along the way. They'll be that much more ready to approach their every day with confidence and ease. And we're confident we'll be the one throat you won't want to choke. The Kore-Tek team will be your network champions, safeguarding your new investment and making sure you and those who rely on your network get the best experience possible.

Here's a closer look at what we can do for you.

## Warehouse Staging

- Inventory the SKUs and serial numbers
- Kit any component parts
- Asset tag
- Sort the equipment by site for shipment
- Update your online records
- Load a configuration

## Network Integration

- Ensures equipment ports and circuits are labeled at the site, powered-up and tested
- As more than one site is deployed, circuit testing is performed to establish integration
- Manage site unknowns (particularly if site surveys were not done) such as: fiber testing, ensuring adequate rack space for airflow, power, etc.
- Manage hot cuts for brownfield deployments to minimize service disruption

## Delivery & Deployment

- Receive the equipment at the site(s), inventory
- Create an engineering design package, including installed equipment and GUI photos, serial numbers, and a map of the network equipment and connectivity

## Testing & Turn-up

- Load the equipment with given or created IP addresses and assure the team can "ping" them and login
- Provide staff with a "run book" and guide them through all site documentation
- Train staff, discuss best practices, and answer any operational questions

## High Value Investment

Feel confident that you'll get the most from your new network equipment investment as quickly as possible and content knowing our team will set you off on the right foot. There are both tangible and intangible benefits of Deployment Services. They create immediate value and minimize the risk of extra cost at the outset of your project and down the road, such as:

### Warehousing & Staging

- Make certain you have received exactly what you ordered.
- Secures equipment until an installation crew is on site.
- Confirms all new gear powers-up early on to minimize finding out-of-box failures during installation.
- Asset tagging helps manage depreciation, respond to any field notifications from the manufacturer, and to any additions, changes, or alarms.



### Delivery & Deployment

- Labeling and cleanliness of the site installation makes it easy to understand, identify, and manage the network going forward.
- Getting it done right the first time by a team who understands the complexity of the physical layer is much less costly than being met with problems if the staff cannot turn-up and integrate the systems. That results in decommissioning and starting over, adding a lot more time and cost to your project.

### Network Integration

- Our approach to ensuring individual sites are fully functional before moving on to another means no back-and-forth trouble shooting at the end of delivering and installing your equipment. All ancillary parts are accounted for. Controls are in place to confirm that all circuits are functional.
- If fiber is needed, Network Integration services clarify the type of fiber, where it has to go, and the fiber connection type.



### Testing & Turn-up

- Minimizes ambiguity with staff so they are able to effectively manage the network as it goes live and any day thereafter. Staff will hear instructions, have hands-on experience with the systems, and be able to refer to documentation.

## If you're wondering if Deployment services or a new approach to upgrading your network is appropriate, consider these questions.

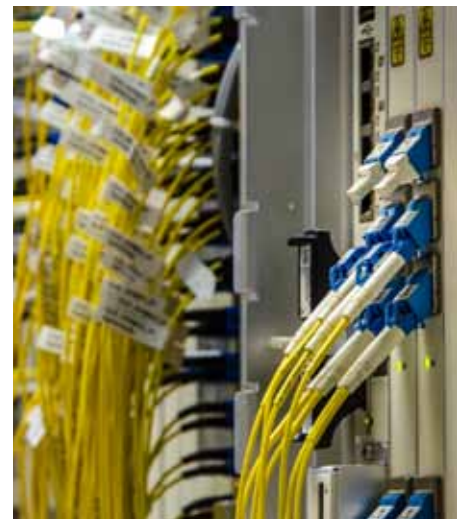
- 1 Do you have the warehouse capacity in a good location to stage and store equipment for your deployment (especially if it's 50 sites or more worth of gear)?
- 2 Do you have enough layer 1 through layer 3 skilled staff on hand to manage this work?
- 3 Were pre-deployment services done to validate that the physical plant is ready for an upgrade? (The theoretical design has been validated to confirm bandwidth requirements, distances between location, fiber characterization, and site surveys to establish adequate rack space, power requirements, etc. are available.)
- 4 Have you worked with another firm and been mired in change orders? Our high-control approach is to minimize surprises and mitigate impacts to time and budget by isolating and resolving any issues as quickly as possible.
- 5 How efficiently is your team able to manage day-to-day maintenance? Are your network assets labeled and site changes documented?

### Choose Kore-Tek

Our staff are among the most experienced in the industry. Average tenure is more than five years and average experience of over twenty years. The team is ready to bring their rich experience to you.

At Kore-Tek, we are committed to ensuring your network is delivering as promised - at its maximum potential. Knowing your new technology investments don't operate in a vacuum, we ensure your physical plant is up to the task and that your team will find everything better than they left it. We will treat your network like it's our own and deliver it to you looking and performing its best.

Learn more about Kore-Tek Deployment Services at [www.Kore-Tek.com](http://www.Kore-Tek.com).



Founded by optical network specialists, Kore-Tek is widely recognized for their unparalleled expertise in critical network infrastructure, providing everything from fiber network architectures to multi-technology optical networking, routing and switching implementations.

Trusted and credentialed by major equipment manufacturers and technology service providers — and backed by decades of experience — Kore-Tek engineers have planned, designed, and managed some of the most relied-upon public and private networks in use today, improving network operations and making complex, next generation digital transformations, simple.

**Businesses depend on networks. Network professionals depend on Kore-Tek.**

© 2023 Kore-Tek Technologies LLC

225 South Sixth Street, Suite 3900  
Minneapolis, MN 55402  
[Kore-Tek.com](http://Kore-Tek.com)

December 2023